

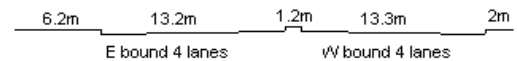
YEAR 2022

CORE STATION 3003

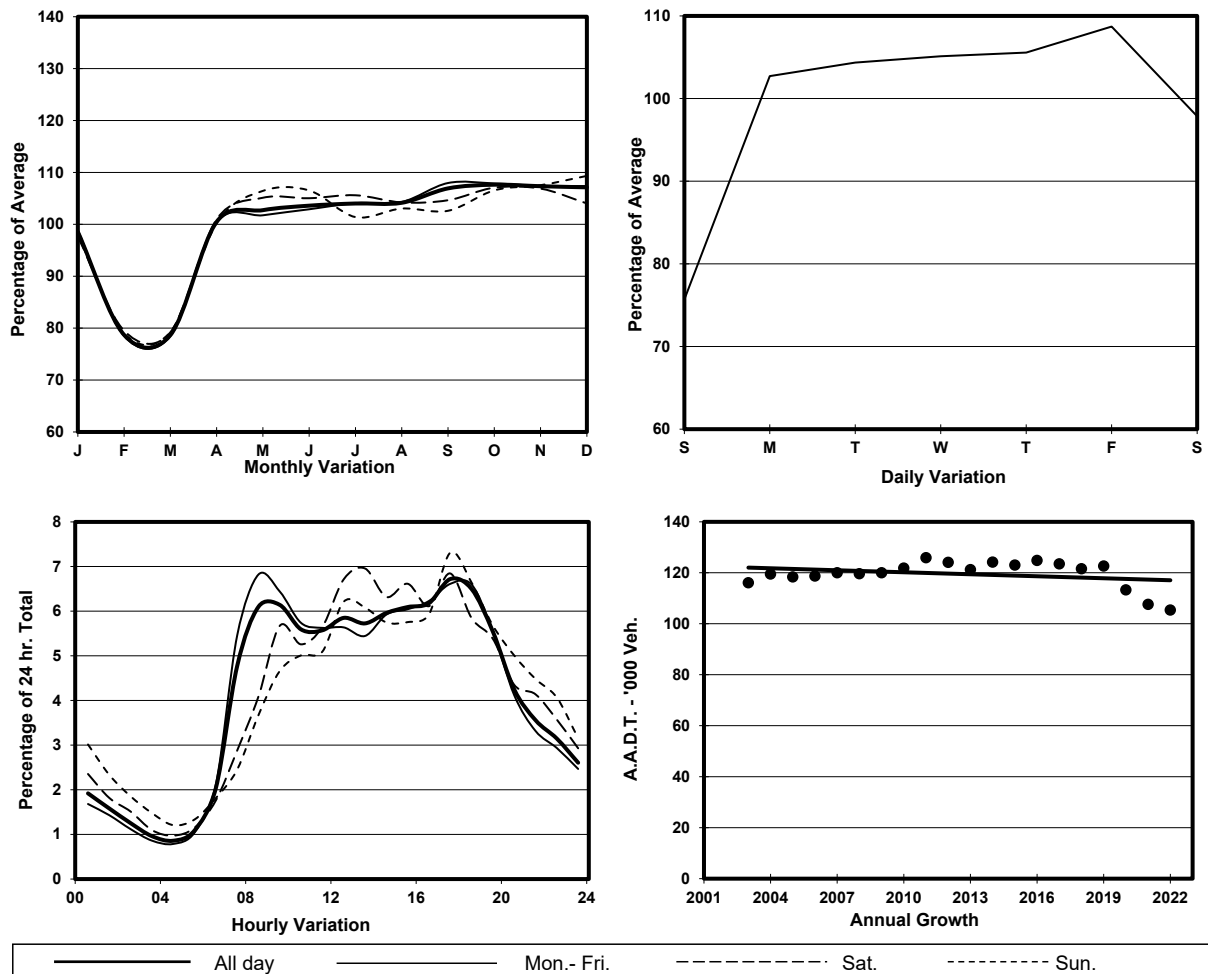
ROAD NETWORK MAJOR

ROAD TYPE URBAN TRUNK ROAD

LINK PRINCE EDWARD RD E & FO <K10A> (from CHOI HUNG RD to NEAR KING TAI COURT)



## 1. TRAFFIC FLOW VARIATION AND GROWTH



## 2. TRAFFIC CHARACTERISTICS (BY DIRECTION)

Parameter	All - Day	Mon. - Fri.	Sat.	Sun.
<b>EAST BOUND</b>				
A.A.D.T.	58700	63440	56190	43080
R 12 / 24 - %	69.6	71.1	66.6	63
R 16 / 24 - %	87.1	87.8	85.7	83.5
AM Peak Hour	0900-1000	0800-0900	0900-1000	0900-1000
One-way flow at AM peak hour	3640	4220	3150	1930
T - % (AM)	-	-	-	-
PM Peak Hour	1700-1800	1700-1800	1700-1800	1700-1800
One-way flow at PM peak hour	3900	4070	3840	3510
T - % (PM)	-	-	-	-
Prop.of commercial vehicles - 16 hr.	-	-	-	-
<b>WEST BOUND</b>				
A.A.D.T.	46670	49020	48300	37640
R 12 / 24 - %	73.2	74.5	71.8	66.4
R 16 / 24 - %	88.4	89.3	87.2	84.1
AM Peak Hour	0800-0900	0800-0900	0900-1000	0900-1000
One-way flow at AM peak hour	2960	3450	2780	1840
T - % (AM)	-	-	-	-
PM Peak Hour	1800-1900	1800-1900	1700-1800	1700-1800
One-way flow at PM peak hour	3260	3550	3310	2390
T - % (PM)	-	-	-	-
Prop.of commercial vehicles - 16 hr.	-	-	-	-

## 3. OTHER INFORMATION AND COMMENT